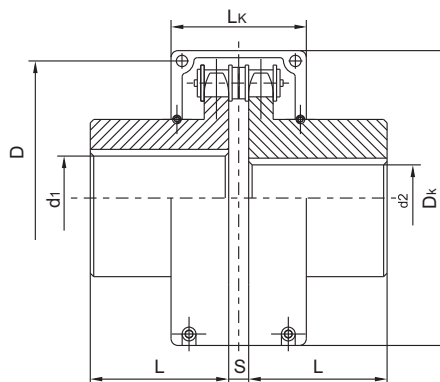


## GL型滚子链联轴器

GL Roller chain coupling



GL 型滚子链联轴器  
GL type roller chain coupling

### ◇ 结构性能 Structure capability

- 双排滚子链采用GB1243.1-83《传动用短节距精密滚子链》规定的链条。
- 轴孔键槽形式及尺寸符合GB/T3852-1997规定。
- 使用罩壳的结构及尺寸，根据需要选定。
- 标记符合GB/T3852-1997。
- 结构简单、装拆方便。所转时有空行程，不宜用于冲击载荷很大的逆向传动。

- The chains of duplex roller chain coupling should accord with the prescripts of 《short period mecision roller chain used for transmission》 of GB1243.1-83.
- Keyway forms and sizes should accord with the prescripts of GB/T 3852-1997.
- Structure and sizes of housing cover can be selected upon requirements of clients.
- Mark should accord with GB/T3852-1997.
- Simple structure, it is convinient for assemble and disassemble, not apply for converse driving with impacting loading.

### ◇ 标记示例（有罩壳时，型号后加“F”） Mark sample (please add “F” when there is housing)

GL3型滚子链联轴器，有罩壳

主动端：J型孔、A型键槽，d1=25，L=44

从动端：J型孔、A型键槽，d2=25，L=44

联轴器：GL3F J25×44 GB/T6069-2002

GL7型滚子链联轴器

主动端：J型孔、B型键槽，d1=45，L=84

从动端：Y型孔、B型键槽，d2=50，L=84

联轴器：GL7  $\frac{J1B45 \times 84}{Yb50 \times 84}$  GB/T6069-2002

GL3 type roller chain coupling with housing

Drive end: J1 type shaft hole, A type keyway, d1 is 25mm, L is 44mm

Driven end: J1 type shaft hole, A type keyway, d2 is 25mm, L is 44mm

Coupling noted as: GL3F J25×44 GB/T6069-2002

GL7 type roller chain coupling

Drive end: J1 type shaft hole, B type keyway, d1 is 45mm, L is 84mm

Driven end: J1 type shaft hole, B type keyway, d2 is 50mm, L is 84mm

Coupling noted as: GL7  $\frac{J1B45 \times 84}{Yb50 \times 84}$  GB/T6069-2002

### ◇ GL型滚子链联轴器基本参数和主要尺寸(GB/T6069-2002)

Base figure and main size of GL type roller chain coupling accord with GB/T6069-2002

型号 Type	公称扭矩 Nominal torsion N.m	许用转速 Limited rotational speed rpm		轴孔 直径 Diameter Of the Shaft hole d1、d2 mm	轴孔长度 Length of the shaft hole		链号 Chain size	链条 节距 Chain pitch P mm	齿数 number of teeth Z	D	S	Dk (最大) Maxi- mum	Lk (最大) Maxi- mum	重量 Weight Kg	转动 惯量 Rotate inertia Kg.m²	许用补偿量 Limited compensation		
		不装 罩壳 without housing	安装 罩壳 with housing		Y型 Type	J1型 Type										径向 Radial	轴向 Axial	角向 Angle
					L					mm						mm	mm	°
GL1	40	1400	4500	16	42	-	06B	9.525	14	51.06	4.9	70	70	0.40	0.00010	0.19	1.4	1°
				18	42	-												
				18	42	-												
				20	52	38												
GL2	63	1250	4500	19	42	-	06B	9.525	16	57.08	4.9	75	75	0.70	0.00020	0.19	1.4	1°
				20	52	38												
				22	52	38												
				24	52	38												
GL3	100	1000	4000	20	52	38	08B	12.7	14	68.88	6.7	85	80	1.1	0.00038	0.25	1.9	1°
				22	52	38												
				24	52	38												
				25	62	44												

## ◇GL型滚子链联轴器基本参数和主要尺寸(GB/T6069-2002)

Base figure and main size of GL type roller chain coupling accord with GB/T6069-2002

型号 Type	公称扭矩 Nominal torsion N.m	许用转速 Limited rotational speed rpm		轴孔直径 Diameter Of the shaft hole d1、d2 mm	轴孔长度 Length of the shaft hole		链号 Chain size	链条节距 Chain pitch P mm	齿数 number of teeth Z	D	S	Dk (最大) Maxi- mum	Lk (最大) Maxi- mum	重量 Weight Kg	转动惯量 Rotate inertia Kg.m²	许用补偿量 Limited compensation		
		不装罩壳 without housing	安装罩壳 with housing		Y型 Type	J1型 Type										径向 Radial	轴向 Axial	角向 Angle
GL4	160	1000	4000	24	52	-	08B	12.7	16	76.91	69.7	95	88	1.8	0.00086	0.25	1.9	1°
				25	62	44												
				28	62	44												
				30	82	60												
				32	82	60												
GL5	250	800	3150	28	62	-	10A	15.875	16	94.46	9.2	112	100	3.2	0.0025	0.32	2.3	1°
				30	82	60												
				32	82	60												
				35	82	60												
				38	82	60												
				40	112	84												
GL6	400	630	2500	32	82	60	10A	15.875	20	116.57	9.2	140	105	5.0	0.0058	0.32	2.3	1°
				35	82	60												
				38	82	60												
				40	112	84												
				42	112	84												
				45	112	84												
				48	112	84												
				50	112	84												
GL7	400	630	2500	40	112	84	12A	19.05	18	127.78	10.9	150	122	7.4	0.012	0.38	2.8	1°
				42	112	84												
				45	112	84												
				48	112	84												
				50	112	84												
				60	142	107												
GL8	1000	500	2240	45	112	84	16A	25.40	16	154.33	14.3	180	135	11.1	0.025	0.50	3.8	1°
				48	112	84												
				50	112	84												
				55	112	84												
				60	142	107												
				65	142	107												
				70	142	107												
GL9	1600	500	2000	50	112	84	16A	25.40	20	186.50	14.3	215	145	20.0	0.061	0.50	3.8	1°
				55	112	84												
				60	142	107												
				65	142	107												
				70	142	107												
				75	142	107												
				80	172	132												

## GL型滚子链联轴器

GL roller chain coupling

### ◇GL型滚子链联轴器基本参数和主要尺寸(GB/T6069-2002)

Base figure and main size of GL type roller chain coupling accord with GB/T6069-2002

型号 Type	公称扭矩 Nominal torsion N.m	许用转速 Limited rotational speed rpm		轴孔直径 Diameter Of the Shaft hole d1、d2 mm	轴孔长度 Length of the shaft hole		链号 Chain size	链条节距 Chain pitch P mm	齿数 number of teeth Z	D	S	Dk (最大) Maxi- mum	Lk (最大) Maxi- mum	重量 Weight Kg	转动惯量 Rotate inertia Kg.m²	许用补偿量 Limited compensation		
		不装罩壳 without housing	安 装罩壳 with housing		Y型 Type	J1型 Type										径向 Radial	轴向 Axial	角向 Angle
					L											mm	mm	°
GL10	2500	315	1600	60	142	107	20A	31.75	18	213.02	17.8	245	165	26.1	0.079	0.63	4.7	1°
				65	142	107												
				70	142	107												
				75	142	107												
				80	172	132												
				85	172	132												
				90	172	132												
GL11	4000	250	1500	75	142	107	24A	38.1	16	231.49	21.5	270	195	39.2	0.188	0.76	5.7	1°
				80	172	132												
				85	172	132												
				90	172	132												
				95	172	132												
				100	212	167												
GL12	6300	250	1250	85	172	132	28A	44.45	16	270.08	24.9	310	205	59.4	0.380	0.88	6.6	1°
				90	172	132												
				95	172	132												
				100	212	167												
				110	212	167												
				120	212	167												
GL13	10000	200	1120	100	212	167	32A	50.8	18	340.80	28.6	380	230	86.5	0.860	1.0	7.6	1°
				110	212	167												
				120	212	167												
				125	212	167												
				130	252	202												
				140	252	202												
GL14	16000	200	1000	120	212	167	32A	50.8	22	405.22	28.6	450	250	150.8	2.06	1.0	7.6	1°
				125	212	167												
				130	252	202												
				140	252	202												
				150	252	202												
				160	302	242												
GL15	25000	200	900	140	252	202	40A	63.5	20	466.25	35.6	510	285	234.4	4.37	1.27	9.5	1°
				150	252	202												
				160	302	242												
				170	302	242												
				180	302	242												
				190	352	282												

注：表中联轴器重量，转动惯量是近似值。

Note: It is similar value of rotate inertia and weights of coupling in the sheet above.